

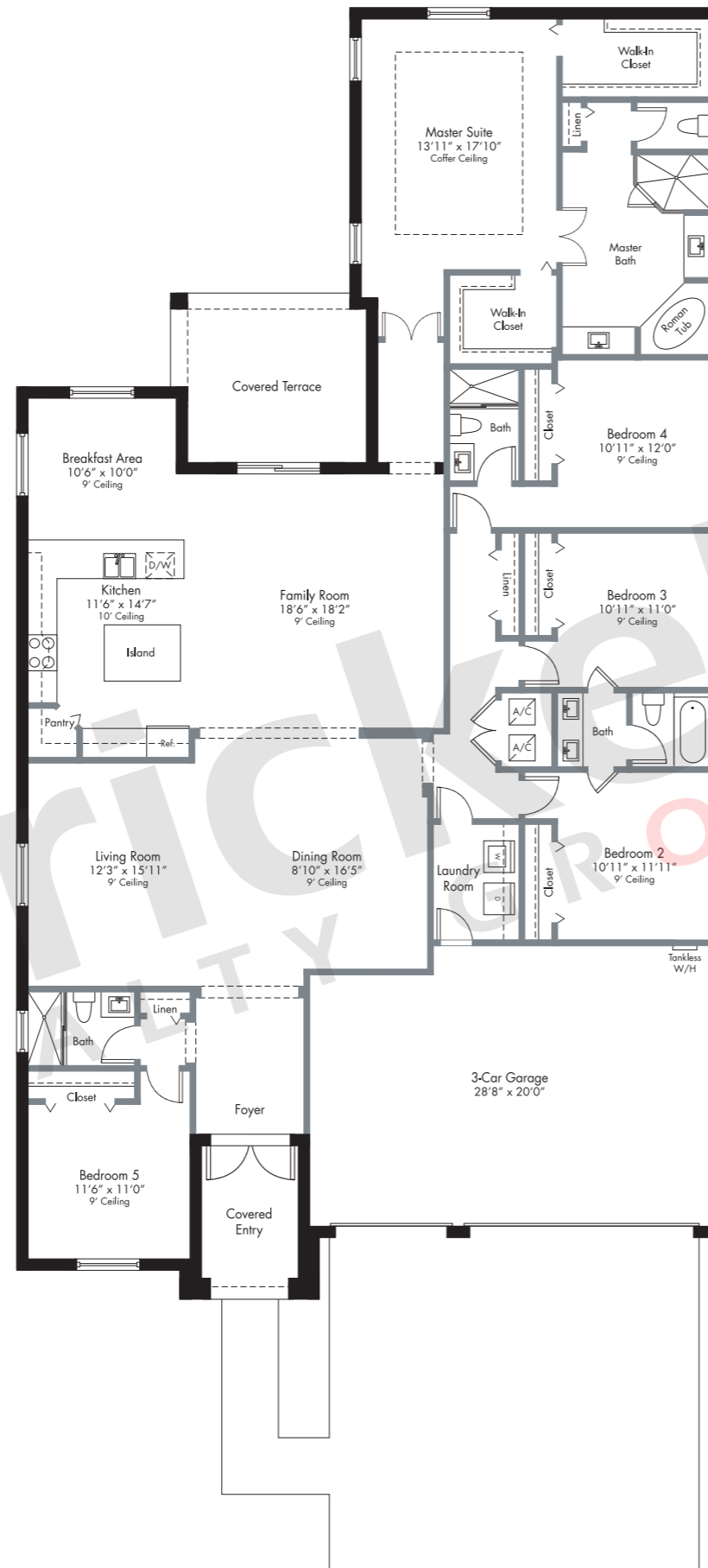
LOS PRADOS

Orchid

1-story

5 Bedrooms · 4 Baths
Breakfast Area · Covered Terrace
3-Car Garage

	SQ FT	M ²
A/C Area	3,038	282.2
Covered Entry	89	8.3
Covered Terrace	159	14.8
Garage	588	54.6
Total	3,874	359.9



Brickell REALTY GROUP

2071 NW 112th Avenue, Miami, FL 33172

www.brickell-realty.com/LosPrados.html

Oral representation cannot be relied upon as correctly stating representations of the developer. Pictures of homes and condos may not reflect the final products which may vary. Dimensions, specifications, improvements, rendering, plans, land uses, materials, amenities, prices, and availability are subject to change at the developer's discretion without notice.

Stated dimensions are approximate and measured to the exterior boundaries of the exterior walls and the centerline of interior demising walls which in fact vary from the dimensions that would be determined by using the description and definition of the "Unit" set forth in the Declaration (which generally only includes the interior airspace between the perimeter walls and excludes interior structural components).