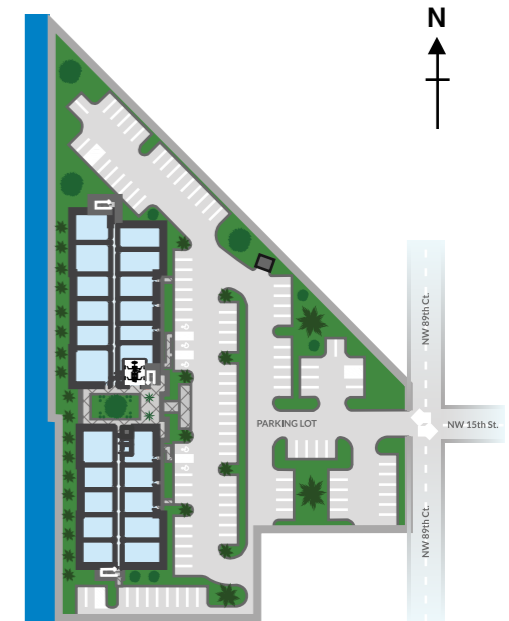




RIVIERA POINT
BUSINESS CENTER
AT DORAL

SITE & KEY PLAN



Level 1

#122
1,229 SF · 114.2 m²

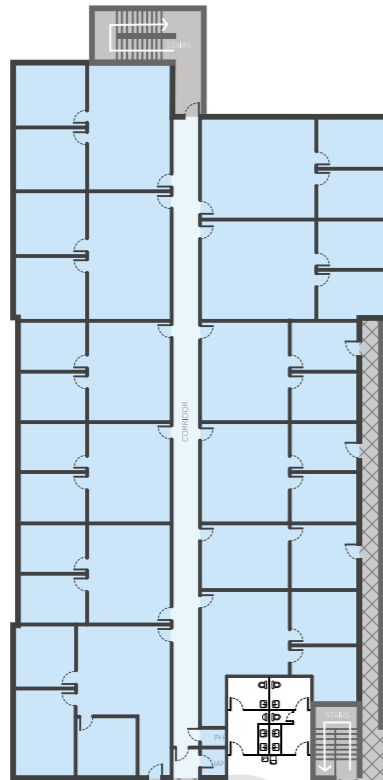
#120
1,254 SF · 116.5 m²

#118
960 SF · 89.2 m²

#116
960 SF · 89.2 m²

#114
960 SF · 89.2 m²

#112
1,488 SF · 138.2 m²



#121
1,200 SF · 111.5 m²

#119
1,174 SF · 109.1 m²

#117
986 SF · 91.6 m²

#115
986 SF · 91.62 m²

#111B
632 SF · 58.7 m²

#111A
979 SF · 90.9 m²

COURTYARD

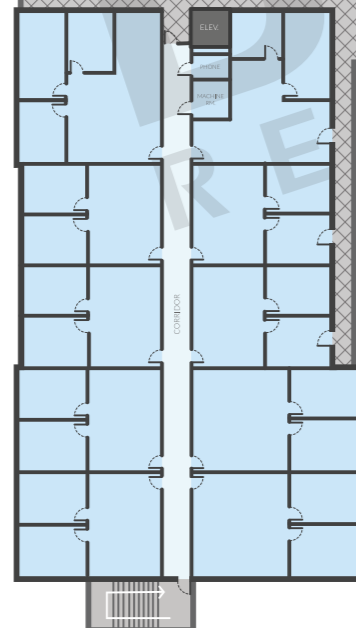
#102
1,355 SF · 125.9 m²

#104
875 SF · 81.3 m²

#106
875 SF · 81.3 m²

#108
931 SF · 86.5 m²

#110
952 SF · 88.4 m²



#101
1,081 SF · 100.4 m²

#103
873 SF · 81.1 m²

#105
873 SF · 81.1 m²

#107
1,101 SF · 102.35 m²

#109
1,126 SF · 104.6 m²

Level 2

#222
1,229 SF · 114.2 m²

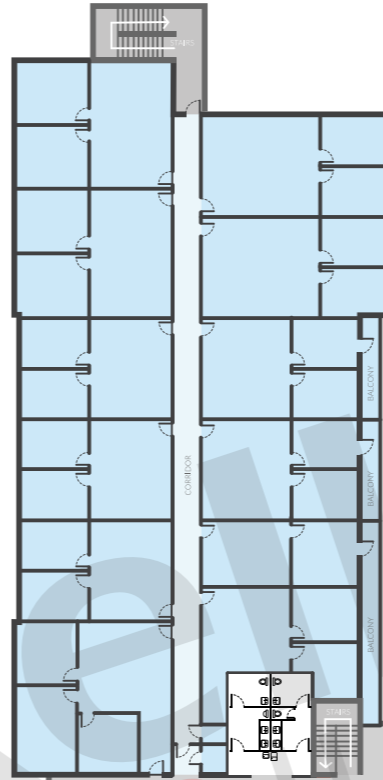
#220
1,254 SF · 116.5 m²

#218
960 SF · 89.2 m²

#216
960 SF · 89.2 m²

#214
960 SF · 89.2 m²

#212
1,488 SF · 138.2 m²



#221
1,200 SF · 111.5 m²

#219
1,174 SF · 109.1 m²

#217
1,000 SF · 92.9 m²

#215
1,000 SF · 92.9 m²

#211B
641 SF · 59.5 m²

#211A
995 SF · 92.4 m²

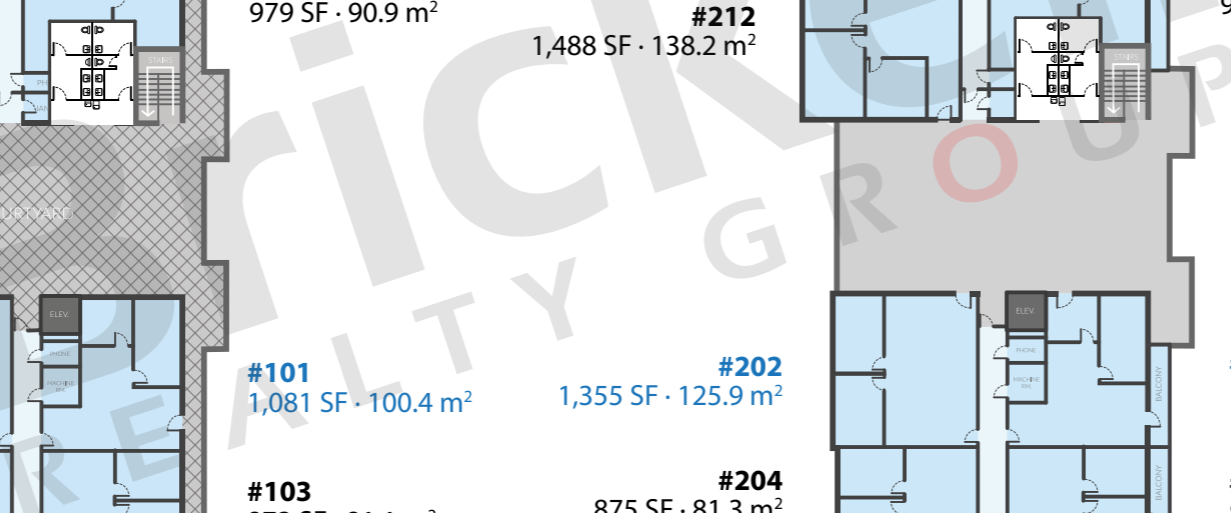
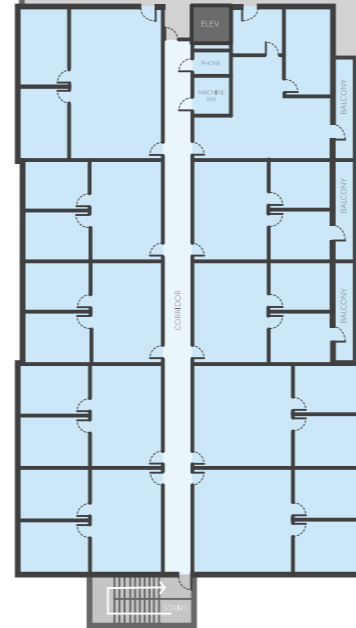
#201
1,185 SF · 110.1 m²

#203
887 SF · 82.4 m²

#205
887 SF · 82.4 m²

#207
1,101 SF · 102.35 m²

#209
1,126 SF · 104.6 m²



Brickell
REALTY GROUP

2071 NW 112th Avenue, Miami, FL 33172

www.brickell-realty.com/RivieraPointDoral.html

Oral representation cannot be relied upon as correctly stating representations of the developer. Pictures of homes and condos may not reflect the final products which may vary. Dimensions, specifications, improvements, rendering, plans, land uses, materials, amenities, prices, and availability are subject to change at the developer's discretion without notice.

Stated dimensions are approximate and measured to the exterior boundaries of the exterior walls and the centerline of interior demising walls which in fact vary from the dimensions that would be determined by using the description and definition of the "Unit" set forth in the Declaration (which generally only includes the interior airspace between the perimeter walls and excludes interior structural components).