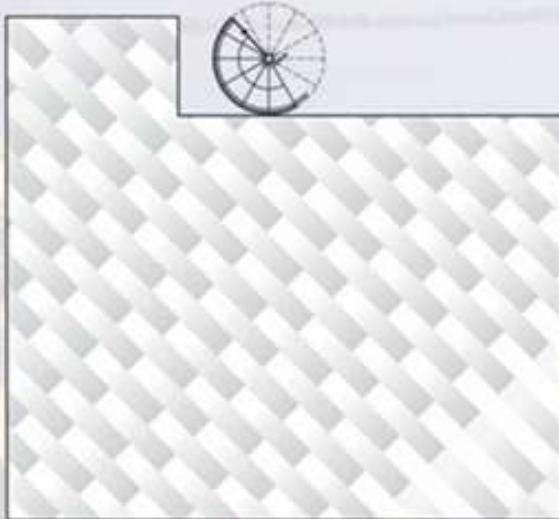
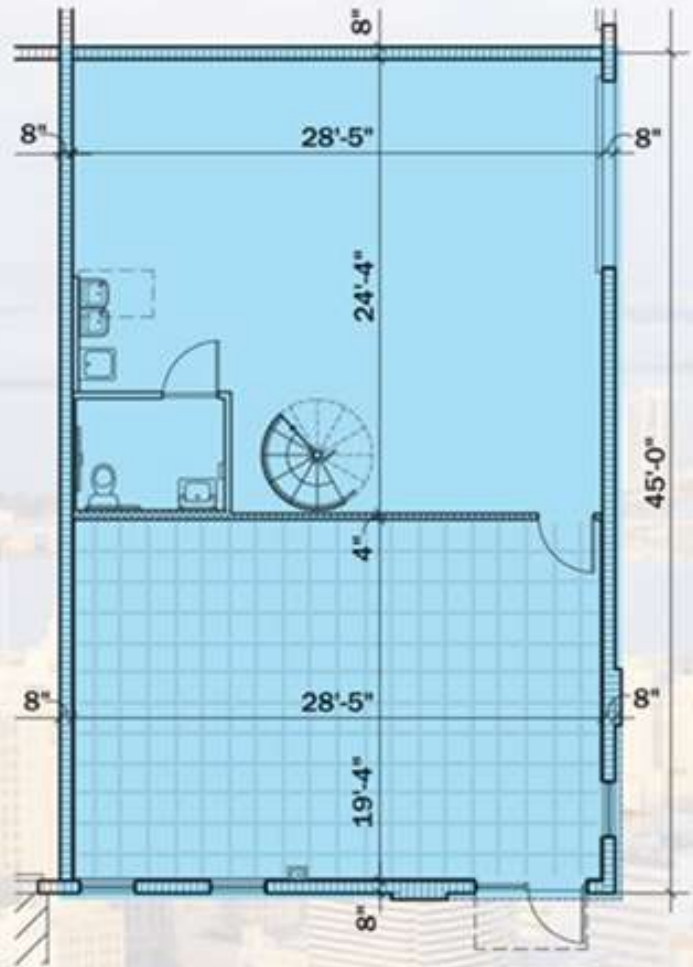


**West Airport Palms**  
BUSINESS PARK



**Mezzanine**  
\*Wood floor or tile optional

\*Prices, plans, artist's renderings, photos, land uses, dimensions, specifications, improvements, amenities and availability are subject to change without notice.



**Bay Type "C" 1/8"**  
Building "C"

731 Sq. Ft. Warehouse  
600 Sq. Ft. Office  
600 Sq. Ft. Mezzanine  
1,931 Total Sq. Ft.