

NORTH

1502 - 2202



ONE THOUSAND MUSEUM
BY ZAHA HADID

HALF-FLOOR RESIDENCES

Zone 1 - Levels 15-25

4 Bedrooms · 5.5 Baths

	SQ FT	M ²
Interior	4,601	427.4
Terrace	819	76.1
Total	5,420	503.5

WEST

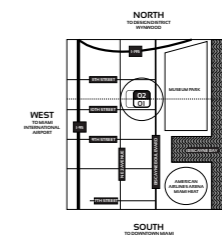
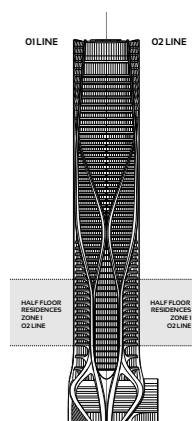
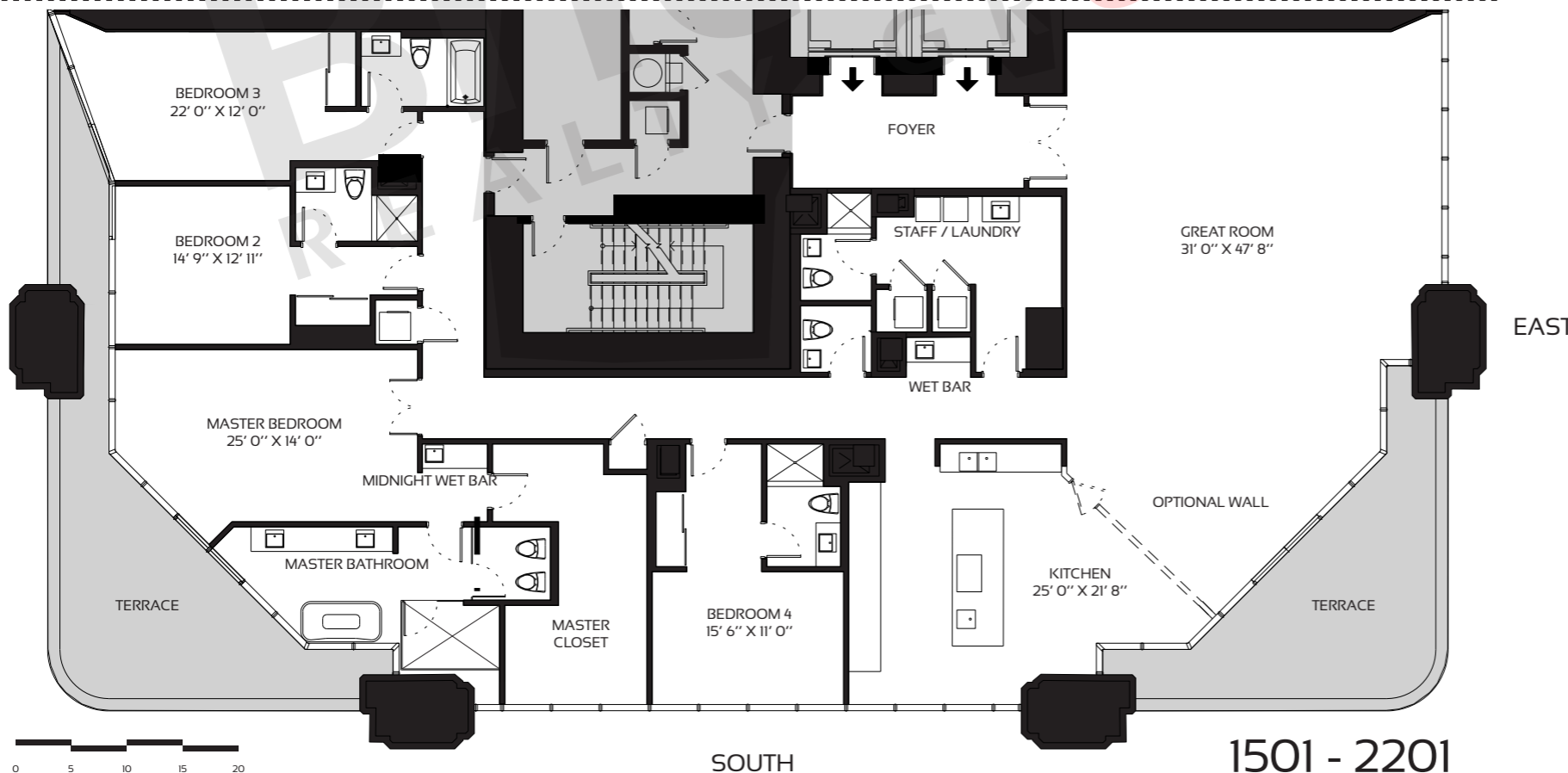
EAST

WEST

EAST

SOUTH

1501 - 2201



Brickell

REALTY GROUP

2071 NW 112th Avenue, Miami, FL 33172

www.brickell-realty.com/1000Museum.html

Oral representation cannot be relied upon as correctly stating representations of the developer. Renderings of residences may not reflect the final products. Dimensions, specifications, improvements, rendering, plans, land uses, materials, amenities, prices, and availability are subject to change at the developer's discretion without notice.

Stated dimensions are approximate and measured to the exterior boundaries of the exterior walls and the centerline of interior demising walls which in fact vary from the dimensions that would be determined by using the description and definition of the "Unit" set forth in the Declaration which generally only includes the interior airspace between the perimeter walls (measuring from interior wall plane to interior wall plane) and excludes interior structural components.

For your reference, the square footage area of the Unit, determined in accordance with those Unit boundaries as defined in the Declaration. Note that measurements of rooms set forth on this floor plan are generally taken at the greatest points of each given room (as if the room were a perfect rectangle), without regard for any cutouts. Accordingly, the area of the actual room will typically be smaller than the product obtained by multiplying the stated length times width.