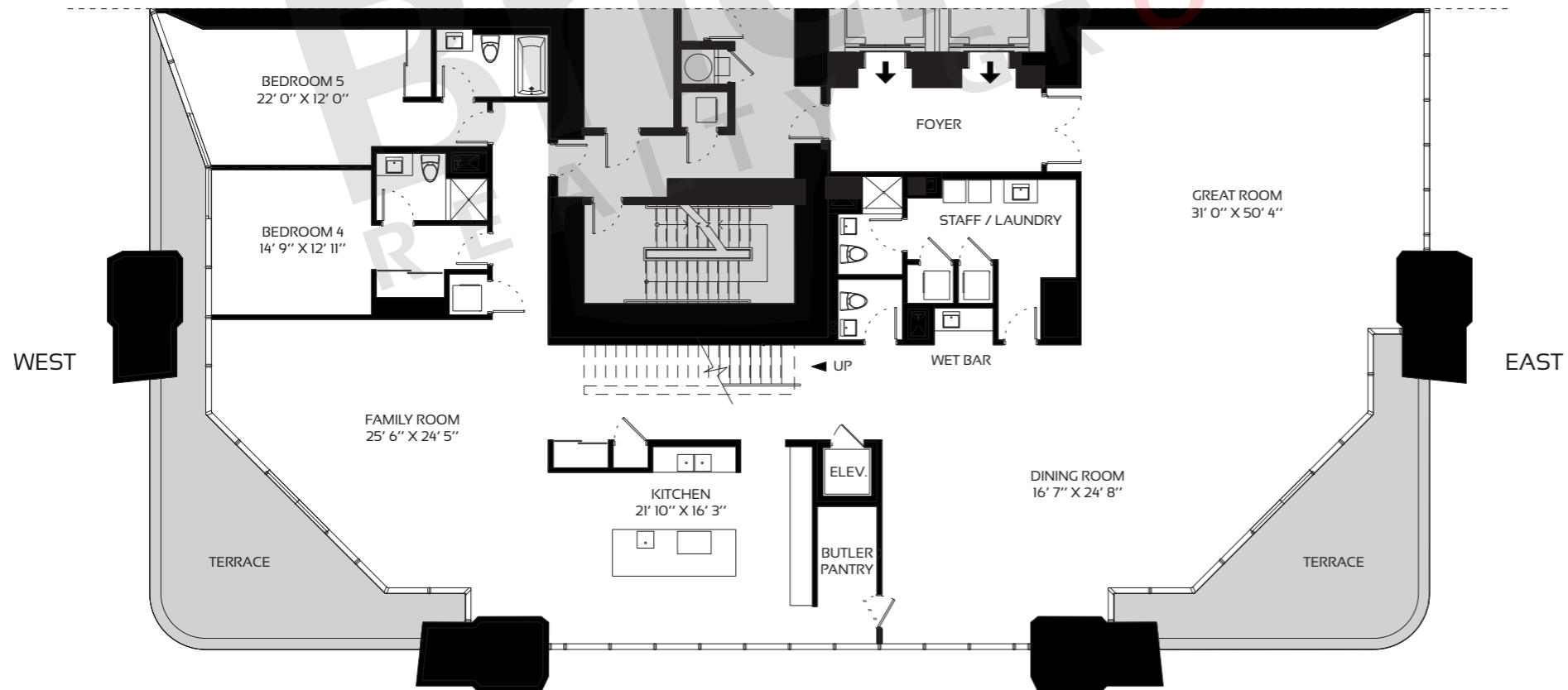
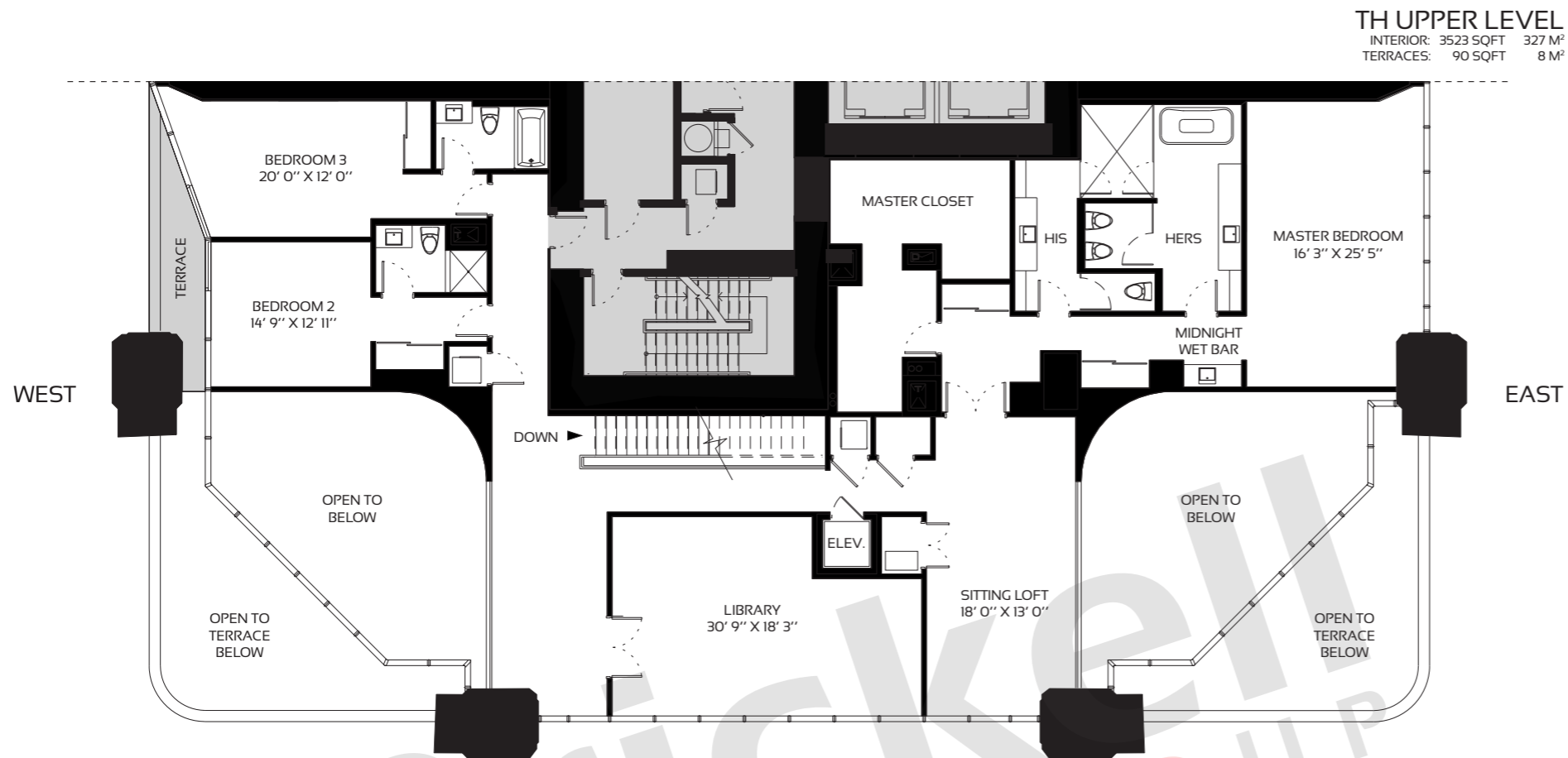


TOWNHOUSE RESIDENCE 1201

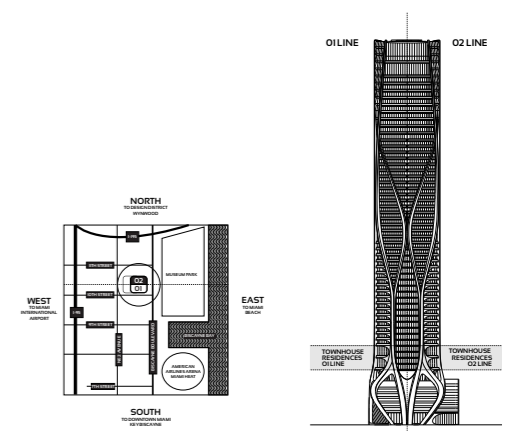
Levels 12-14

5 Bedrooms · 6.5 Baths

	SQ FT	M ²
Interior	8,102	752.7
Terrace	899	83.5
Total	9,001	836.2



1201 LOWER LEVEL
INTERIOR: 4579 SQFT 426 M²
TERRACES: 809 SQFT 76 M²



Brickell REALTY GROUP
2071 NW 112th Avenue, Miami, FL 33172
www.brickell-realty.com/1000Museum.html

Oral representation cannot be relied upon as correctly stating representations of the developer. Renderings of residences may not reflect the final products. Dimensions, specifications, improvements, rendering, plans, land uses, materials, amenities, prices, and availability are subject to change at the developer's discretion without notice.

Stated dimensions are approximate and measured to the exterior boundaries of the exterior walls and the centerline of interior demising walls which in fact vary from the dimensions that would be determined by using the description and definition of the "Unit" set forth in the Declaration which generally only includes the interior airspace between the perimeter walls (measuring from interior wall plane to interior wall plane) and excludes interior structural components.

For your reference, the square footage area of the Unit, determined in accordance with those Unit boundaries as defined in the Declaration. Note that measurements of rooms set forth on this floor plan are generally taken at the greatest points of each given room (as if the room were a perfect rectangle), without regard for any cutouts. Accordingly, the area of the actual room will typically be smaller than the product obtained by multiplying the stated length times width.