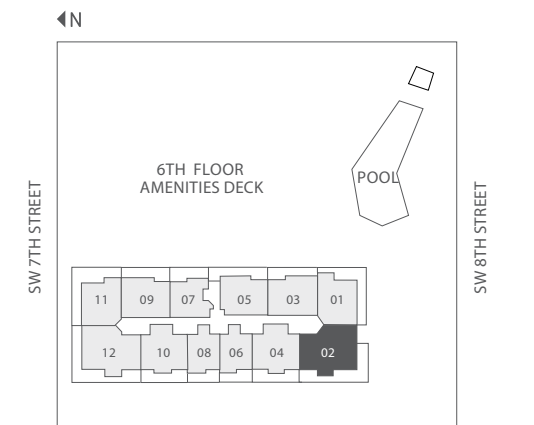
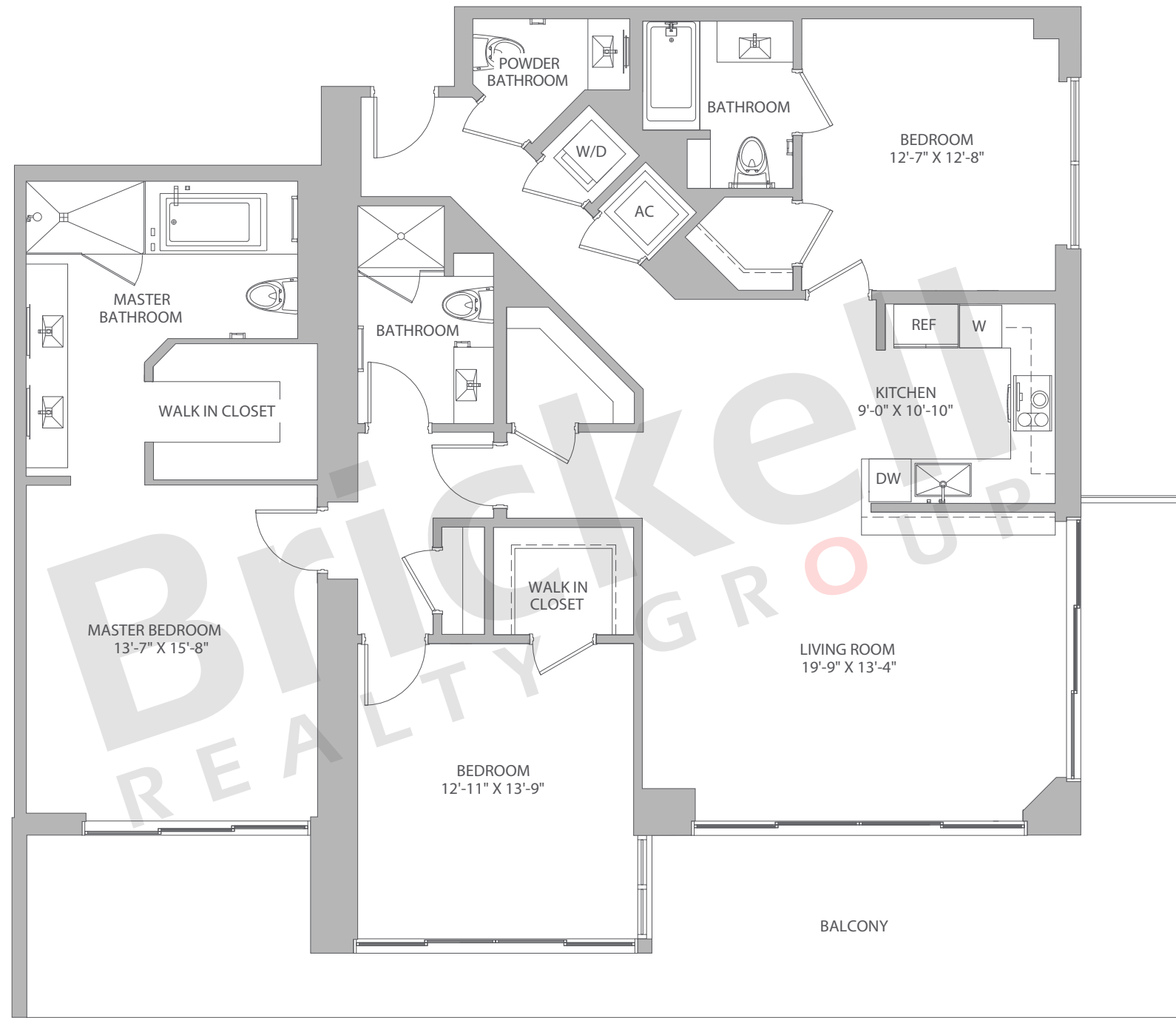


**Line 02**

Floors: 12, 14-36

3 Bedrooms · 3.5 Baths

	SQ FT	M <sup>2</sup>
A/C - 12, 14-21	1,850	172
A/C - 22-33	1,853	172
A/C - 34-36	1,852	172
Balcony	446-450	41-42
<b>Total</b>	<b>2,296-2,303</b>	<b>213-214</b>



**Brickell**  
REALTY GROUP

2071 NW 112th Avenue, Miami, FL 33172

[www.brickell-realty.com/BCC-Rise.html](http://www.brickell-realty.com/BCC-Rise.html)

Oral representation cannot be relied upon as correctly stating representations of the developer. Pictures of homes and condos may not reflect the final products which may vary. Dimensions, specifications, improvements, rendering, plans, land uses, materials, amenities, prices, and availability are subject to change at the developer's discretion without notice.

Stated dimensions are approximate and measured to the exterior boundaries of the exterior walls and the centerline of interior demising walls which in fact vary from the dimensions that would be determined by using the description and definition of the "Unit" set forth in the Declaration (which generally only includes the interior airspace between the perimeter walls and excludes interior structural components).