



CANARIAS

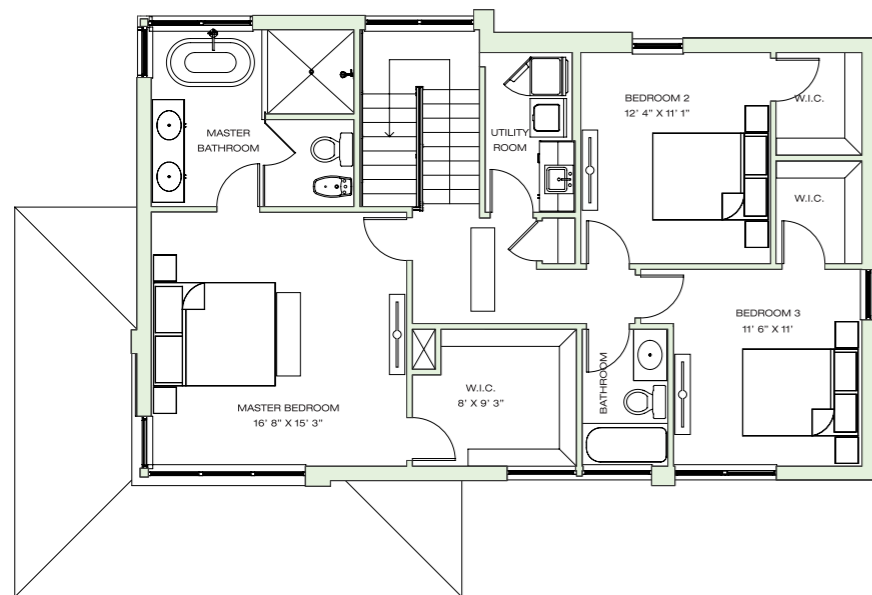
AT DOWNTOWN DORAL

FIJI COLLECTION

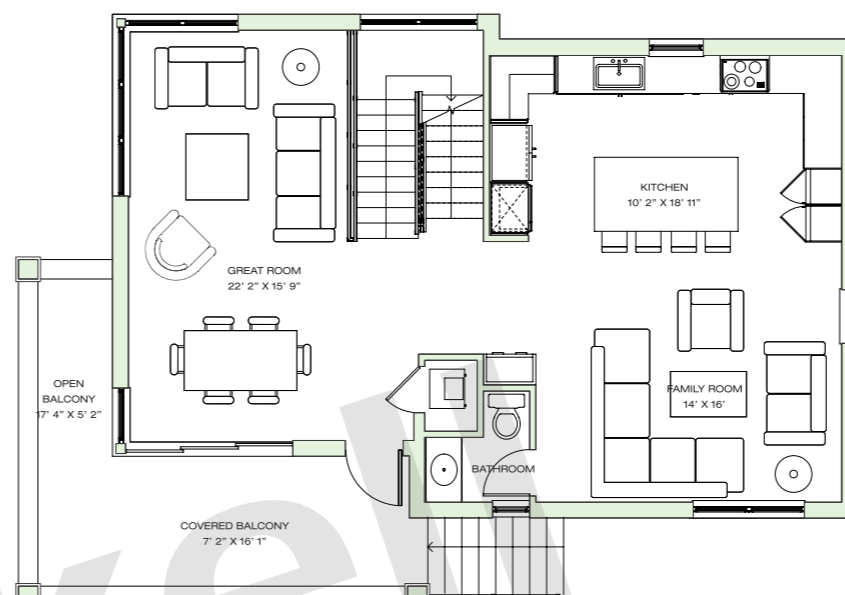
SINGLE FAMILY HOMES

MODEL A · 3-STORY

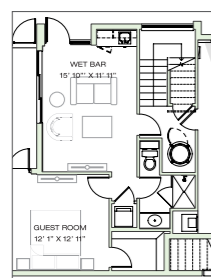
4 BEDROOMS · 3.5 BATHS · 2-CAR GARAGE · GREAT ROOM · FAMILY ROOM · UTILITY ROOM · COURTYARD ELEVATOR & GAME ROOM OPTIONS



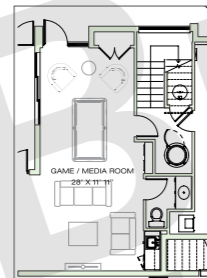
TOP FLOOR



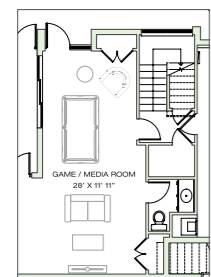
MAIN FLOOR



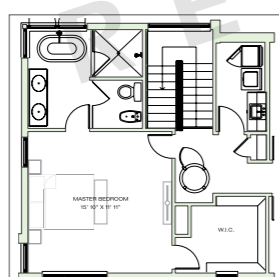
GUEST ROOM & WET BAR W/ELEVATOR OPTION



GAME/MEDIA ROOM W/ELEVATOR OPTION

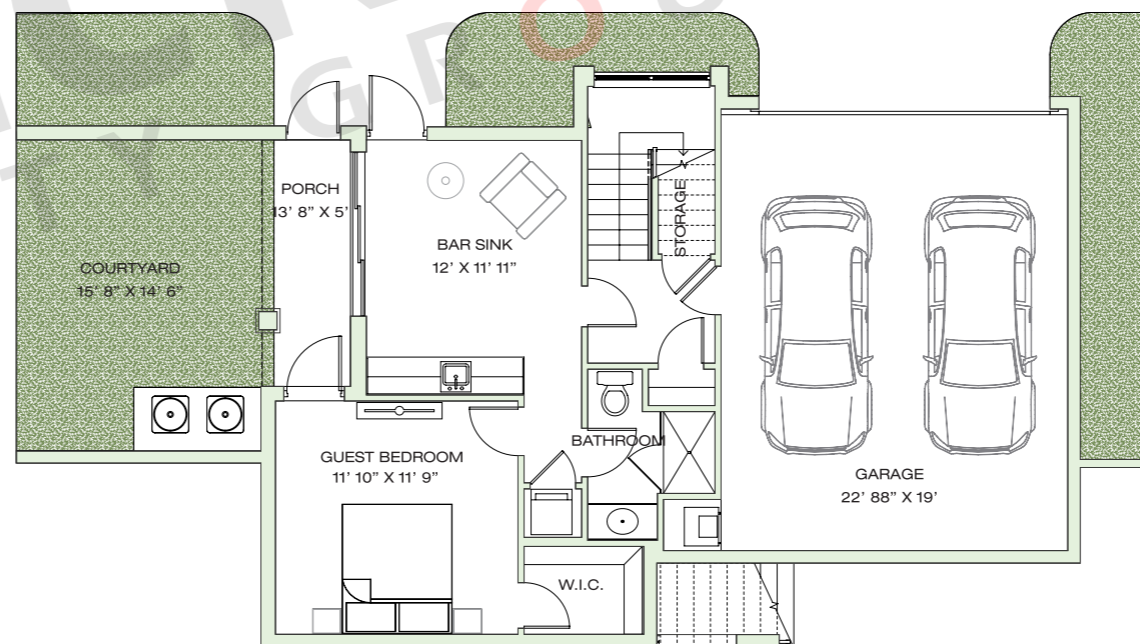


GAME ROOM OPTION



ELEVATOR OPTION

OPTIONS



GROUND FLOOR

	SQ FT	M ²
Interior	2,827	262.6
Open Balcony	90	8.4
Covered Balcony	122	11.3
Covered Porch	72	6.7
Garage	472	43.8
Courtyard	155	14.4
Total	3,738	347.2



SANTA BARBARA



COASTAL

Brickell REALTY GROUP

2071 NW 112th Avenue, Miami, FL 33172

www.brickell-realty.com/Canarias.html

Oral representation cannot be relied upon as correctly stating representations of the developer. Pictures of homes and condos may not reflect the final products which may vary. Dimensions, specifications, improvements, rendering, plans, land uses, materials, amenities, prices, and availability are subject to change at the developer's discretion without notice.

Stated dimensions are approximate and measured to the exterior boundaries of the exterior walls and the centerline of interior demising walls which in fact vary from the dimensions that would be determined by using the description and definition of the "Unit" set forth in the Declaration (which generally only includes the interior airspace between the perimeter walls and excludes interior structural components).