



CANARIAS

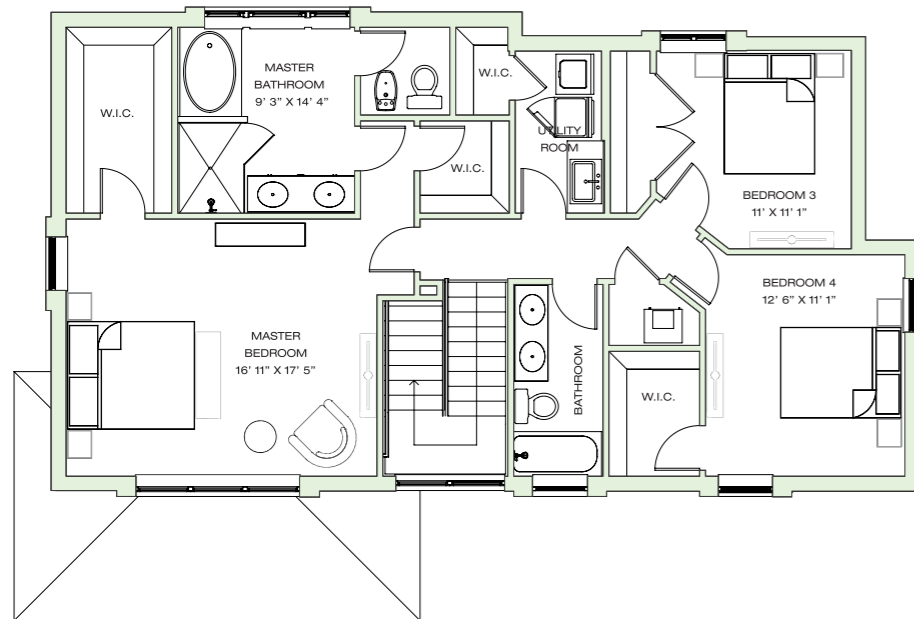
AT DOWNTOWN DORAL

FIJI COLLECTION

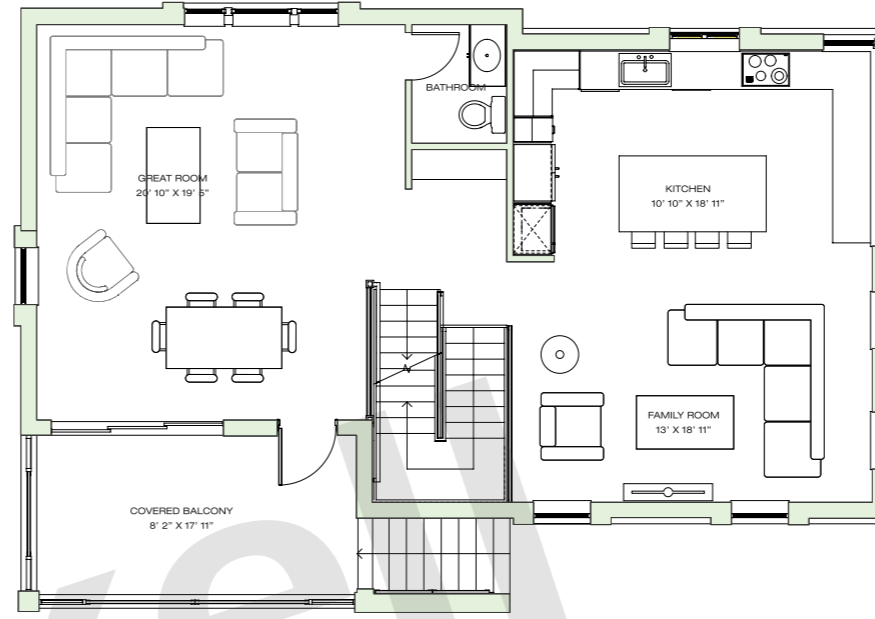
SINGLE FAMILY HOMES

MODEL B • 3-STORY

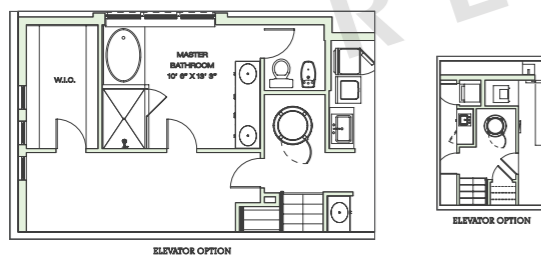
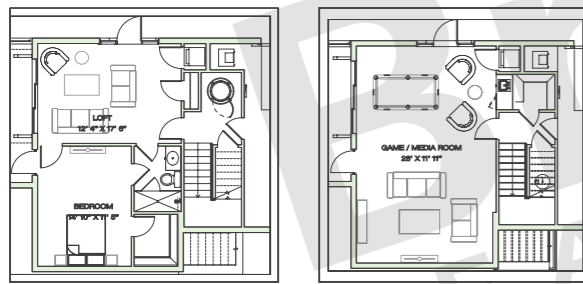
5 BEDROOMS • 3.5 BATHS • 2-CAR GARAGE • UTILITY ROOM • GREAT ROOM • FAMILY ROOM • SITTING AREA • COURTYARD • ELEVATOR & GAME ROOM OPTION



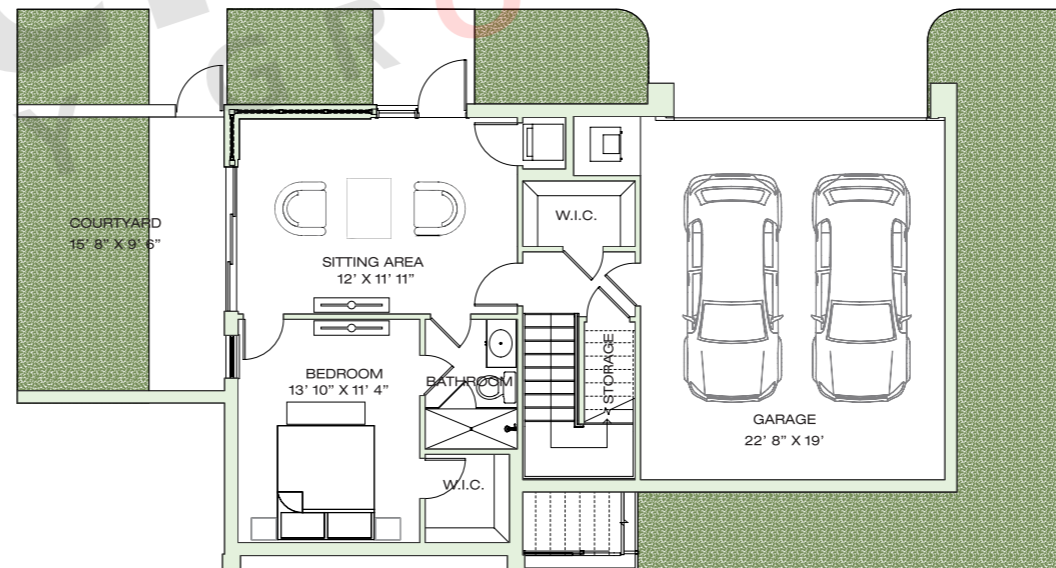
TOP FLOOR



MAIN FLOOR



OPTIONS



GROUND FLOOR

	SQ FT	M ²
Interior	3,132	291.0
Balcony	146	13.6
Covered Porch	85	7.9
Garage	472	43.8
Courtyard	162	15.0
Total	3,997	371.3



CONTEMPORARY - CORNER

Brickell REALTY GROUP

2071 NW 112th Avenue, Miami, FL 33172

www.brickell-realty.com/Canarias.html

Oral representation cannot be relied upon as correctly stating representations of the developer. Pictures of homes and condos may not reflect the final products which may vary. Dimensions, specifications, improvements, rendering, plans, land uses, materials, amenities, prices, and availability are subject to change at the developer's discretion without notice.

Stated dimensions are approximate and measured to the exterior boundaries of the exterior walls and the centerline of interior demising walls which in fact vary from the dimensions that would be determined by using the description and definition of the "Unit" set forth in the Declaration (which generally only includes the interior airspace between the perimeter walls and excludes interior structural components).



SANTA BARBARA



CONTEMPORARY



COASTAL