



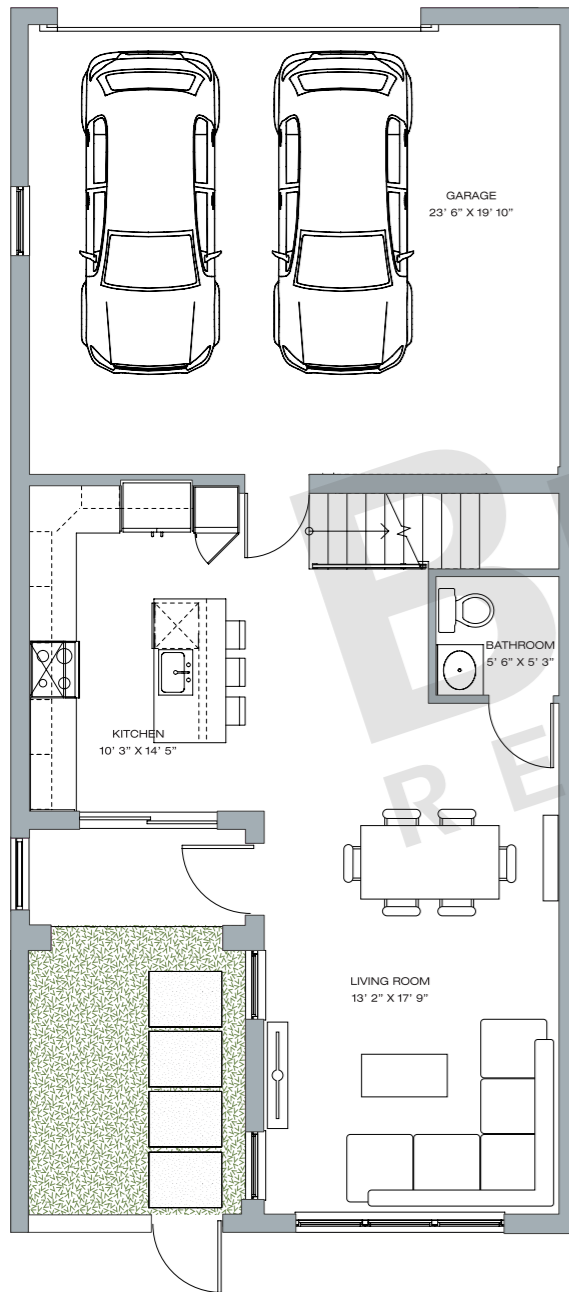
# CANARIAS

AT DOWNTOWN DORAL

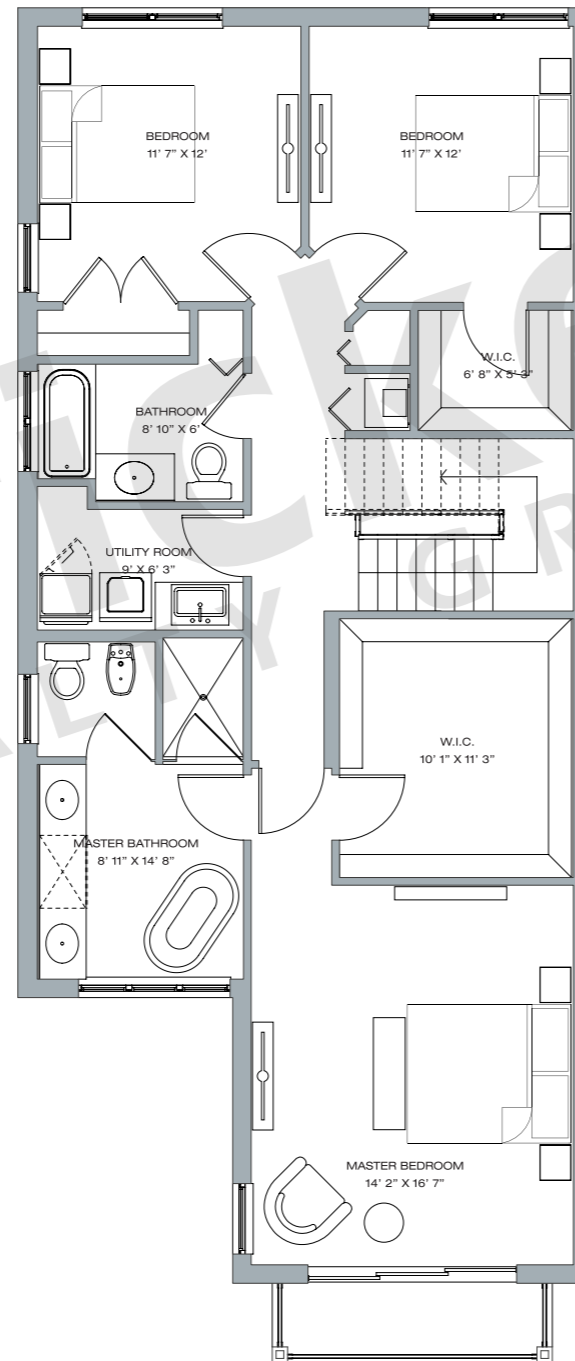
## TAHITI COLLECTION TOWNHOMES

### MODEL C • 3-STORY

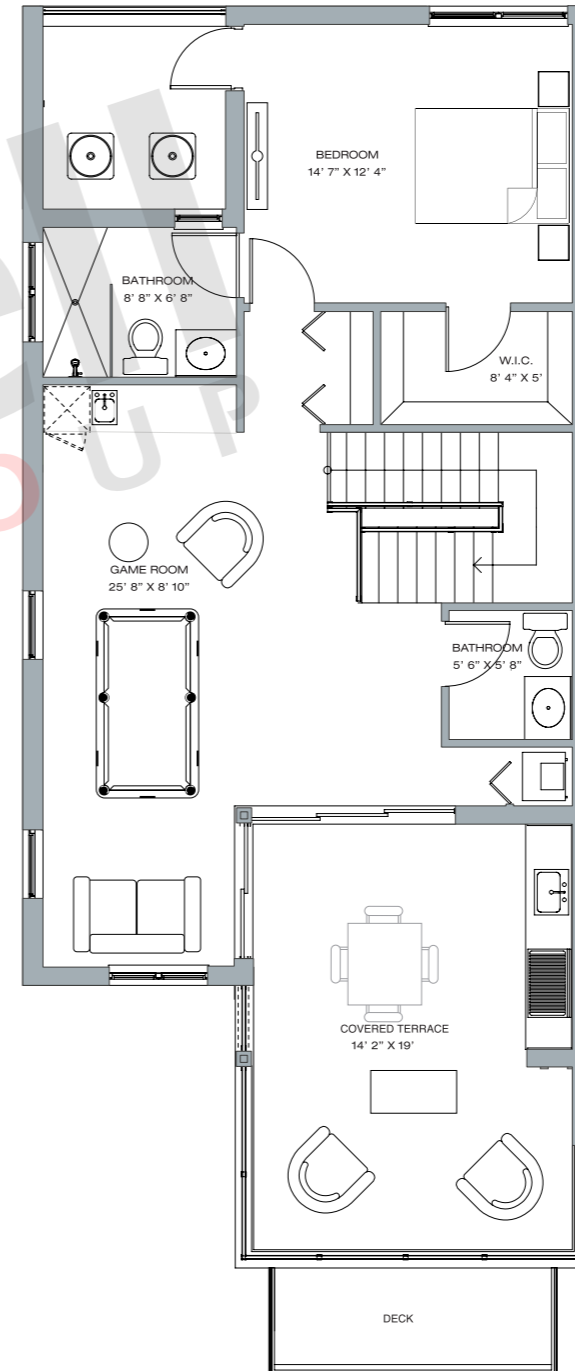
4 BEDROOMS • 3.5.5 BATHS • 2-CAR GARAGE • UTILITY ROOM • ROOF COVERED TERRACE W/GAME ROOM, DECK AND WET BAR • ELEVATOR OPTION



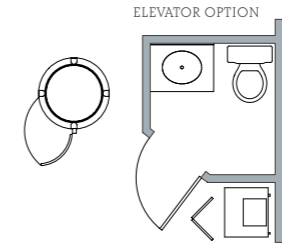
1ST FLOOR



2ND FLOOR



3RD FLOOR



|                 | SQ FT        | M <sup>2</sup> |
|-----------------|--------------|----------------|
| Interior        | 2,757        | 256.1          |
| Balcony         | 54           | 5.0            |
| Covered Porch   | 53           | 4.9            |
| Garage          | 540          | 50.2           |
| Covered Terrace | 155          | 14.4           |
| Deck            | 213          | 19.8           |
| <b>Total</b>    | <b>3,772</b> | <b>350.4</b>   |



## Brickell REALTY GROUP

2071 NW 112th Avenue, Miami, FL 33172

[www.brickell-realty.com/Canarias.html](http://www.brickell-realty.com/Canarias.html)

Oral representation cannot be relied upon as correctly stating representations of the developer. Pictures of homes and condos may not reflect the final products which may vary. Dimensions, specifications, improvements, rendering, plans, land uses, materials, amenities, prices, and availability are subject to change at the developer's discretion without notice.

Stated dimensions are approximate and measured to the exterior boundaries of the exterior walls and the centerline of interior demising walls which in fact vary from the dimensions that would be determined by using the description and definition of the "Unit" set forth in the Declaration (which generally only includes the interior airspace between the perimeter walls and excludes interior structural components).